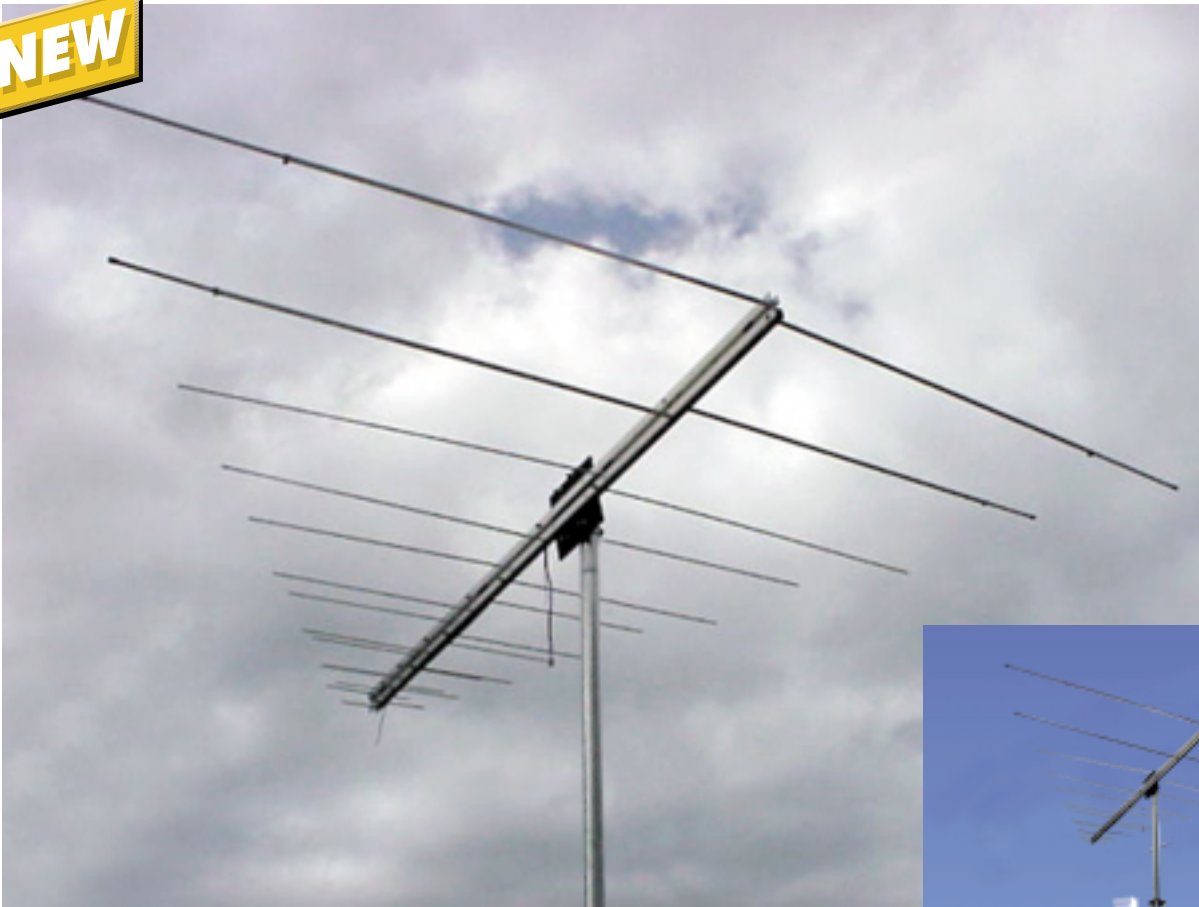


ASL670 LOG PERIODIC ANTENNA

 **6 Meter - 70 CM**

NEW



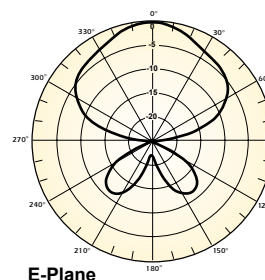
ASL670 Log Periodic

Cushcraft's new ASL670 is the ultimate multi-use antenna. Since the antenna is a log periodic, it offers continuous coverage through the 2 and 6 meter bands as well as 220 and 440 MHz. So, while being a terrific antenna for operating on those bands, it is also a great aviation and public safety band monitoring antenna. Use the antenna for contesting and mountain topping if you like. The antenna is compact and easy to assemble and disassemble with no tuning required. Yet it is rugged enough for permanent installation. The ASL670 really shines in its performance specs.

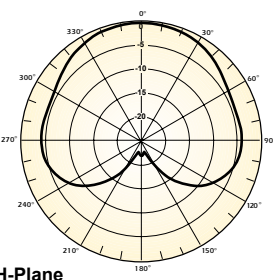
The antenna exhibits excellent gain and f/b with good VSWR bandwidth to boot. Get one today and enjoy the fun of high performance operation and multi-frequency listening all in one compact antenna.

MODEL	ASL670
Frequency, MHz:	50 - 450, Continuous
No. Elements:	14
Forward Gain, dBi, dBd:	6.5, 4.5
Front to Back Ratio, dB:	20
SWR:	1.5:1 Average
Power Rating, Watts PEP:	300
3dB Beamwidth, Degrees, H-Plane:	110
E Plane:	80
Boom Length, ft (m):	6'-8" (1.9)
Boom Size, in (cm):	1.0 x 2.75 (2.54 x 7)
Longest Element, ft (m):	126.6" (3.22)
Turning Radius, Horizontal Mtg. ft (m):	6'-3" (1.9)
Turning Radius, Vertical Mtg. ft (m):	3'-9" (1.15)
Mast Size Range, in (cm):	1.5"-2.5" (3.8-6.4)
Wind Load, ft ² (m ²):	3.0 (.28)
Weight, lb (kg):	11-1/4 (5.15)

- ▶ **Rugged construction**
- ▶ **Easy to install**
- ▶ **Wide band Log Periodic**
- ▶ **Easy to turn**



E-Plane



H-Plane